

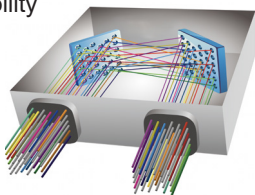
MEMS 16X16 OPTICAL MATRIX SWITCH MODULE

SX1 Model, Single Mode Fiber, Performance Grade



MEMS Optical Matrix Switch Module is built with DiCon’s proprietary MEMS technology. Each module contains 2 sets of MEMS mirrors for making 1-to-1 connections between input and output ports. The MEMS mirrors are held in position using precisely calibrated voltages and require no feedback control. This unique quality enables the switch to maintain stable connections and allows the device to function when there is no light in the fiber. This innovative platform has an outstanding track record and delivers best-in-class optical performance

- Proven MEMS technology
- Lifetime > 10⁹ switch cycles
- No dithering or active alignment artifacts
- Switches and holds dark fiber connections
- Low insertion loss with excellent stability
- Compact and lightweight
- Asymmetric MxN available



About DiCon

- Headquartered in California since 1986
- US based in-house MEMS fab
- Over 3 million MEMS mirrors produced since 1999
- Manufactures TAA compliant products

ORDERING INFORMATION

SX1 - P - 9 - - T - - N -

Grade									
P	Performance								
Switch Configuration									
16x16	16x16								
MxN	M≤16, N≤16								
Fiber Type									
9	9/125 μm SMF								
*Other fiber options available upon request									
Test Wavelength									
O	1310 nm								
E	1410 nm								
S	1495 nm								
C	1550 nm								
L	1590 nm								
U	1650 nm								
*Use "/" to add multiple wavelengths. E.g., O/C or O/C/L									
Fiber Jacket									
T	900 μm Tight Buffer								
*Other fiber options available upon request									
Connector Type									
N	None								
FC	FC/UPC								
FC/APC	FC/APC								
LC	LC/UPC								
LC/APC	LC/APC								
SC	SC/UPC								
SC/APC	SC/APC								
*Other connector types available upon request									
Connector Key Orientation									
N	None								
Pigtail Length									
1	1 Meter								
X	Specify X Meters								
*Tolerance is +/- 0.05 m									

SX1 Model, Single Mode Fiber, Performance Grade

Operating Wavelength	1260 to 1675 nm
Insertion Loss ²	< 0.8 dB
Loss Repeatability ³	+/- 0.01 dB
Connection Stability ⁴	+/- 0.01 dB
Connection Stability (Short Term) ⁵	+/- 0.005 dB
PDL	< 0.1 dB
WDL ⁶	< 0.3 dB
Crosstalk	< -70 dB
Back Reflection	< -50 dB
Optical Transition Time ⁷	< 25 ms
Switch Lifetime	> 1 Billion Cycles
Input Power Range	Dark to +27 dBm

- ## ELECTRICAL SPECIFICATIONS

Module Power Consumption	3.8 W max. Operating 6.5 W max. Start Up
Supply Voltage	12V DC
Module Interface	16-Pin Samtec
Module Control	USB, RS232, I ² C

ENVIRONMENTAL SPECIFICATIONS

Operating Temperature	0 to 50°C, < 85% RH
Storage Temperature	-40 to 70°C, < 40% RH

MECHANICAL SPECIFICATIONS

Module Size	142 mm x 88 mm x 22.2 mm
Module Weight (with fibers)	0.42 kg

